

# \$536,250\*

CRYSTAL 27 With Matrix Facade  
Lot 220 Claremont Meadows

sienna  
gardens 



## Package Includes:

- ACTRON Ducted air conditioning throughout
- Choice of timber, tile &/or carpet floor coverings
- 20mm QUANTUM QUARTZ stone tops to kitchen & vanities
- Polyurethane kitchen & vanities
- TILED ALFRESCO
- BLANCO 900mm stainless steel appliances, including 600mm dishwasher
- Coloured concrete DRIVEWAY
- 3 coat paint system, including 2 feature wall options
- Sarking to underside of roof
- 2750MM CEILINGS as standard
- Plus much more...



### Dimensions

Living	203.01m <sup>2</sup>
Garage	33.23m <sup>2</sup>
Porch	2.56m <sup>2</sup>
Alfresco	12.99m <sup>2</sup>
<b>Total Area</b>	<b>251.79m<sup>2</sup></b>
Width	12.64m
Depth	21.72m



Outdoor Lifestyle



Recreational Space

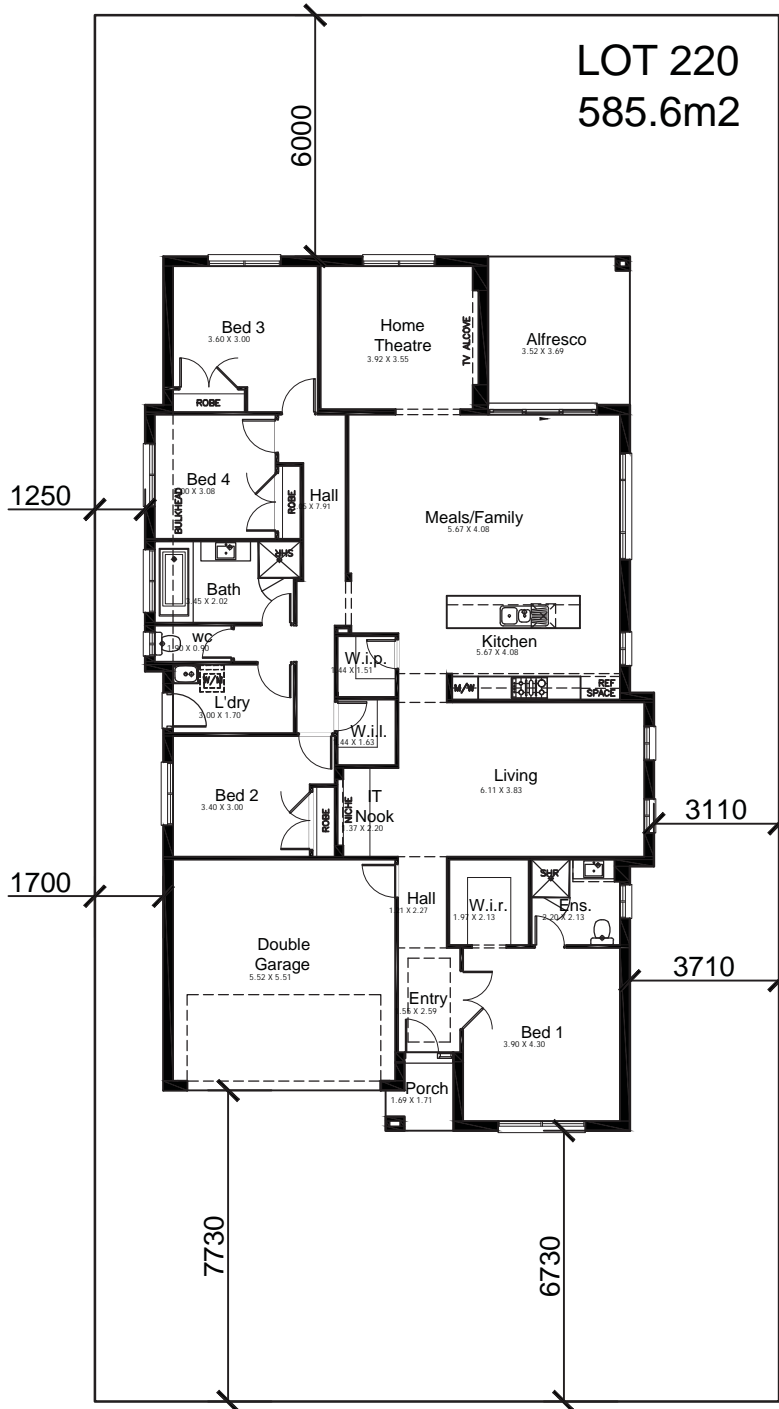
Call **1300 764 761**  
enquiries@kurmondhomes.com.au  
**www.kurmondhomes.com.au**



**kurmondhomes**  
*Designing and building your dream*

Disclaimer: Kurmond Homes reserves the right to change prices & inclusions without prior notice & without obligation. Images shown are for illustrative purposes only. Note: Developer estates may have varying/ additional requirements. Issued 19th January 2012. Lic No. 205 457C

**CRYSTAL 27** With Matrix Facade  
 Lot 220 Claremont Meadows



Call **1300 764 761**  
 enquiries@kurmondhomes.com.au  
**www.kurmondhomes.com.au**



**kurmondhomes**  
*Designing and building your dream*