

# \$533,500\*

**NEWPORT MKII** With Classic Facade  
Lot 225 Claremont Meadows

sienna  
gardens 



*Outdoor Lifestyle*



*Recreational Space*

## Package Includes:

- ACTRON Ducted air conditioning throughout
- Choice of timber, tile &/or carpet floor coverings
- 20mm QUANTUM QUARTZ stone tops to kitchen & vanities
- Polyurethane kitchen & vanities
- TILED ALFRESCO
- BLANCO 900mm stainless steel appliances, including 600mm dishwasher
- Coloured concrete DRIVEWAY
- 3 coat paint system, including 2 feature wall options
- Sarking to underside of roof
- 2750MM CEILINGS as standard
- Plus much more...



### Dimensions

Living	172.69m <sup>2</sup>
Garage	33.19m <sup>2</sup>
Porch	3.04m <sup>2</sup>
Alfresco	14.88m <sup>2</sup>
<b>Total Area</b>	<b>223.80m<sup>2</sup></b>
<hr/>	
Width	11.37m <sup>2</sup>
Depth	22.09m <sup>2</sup>

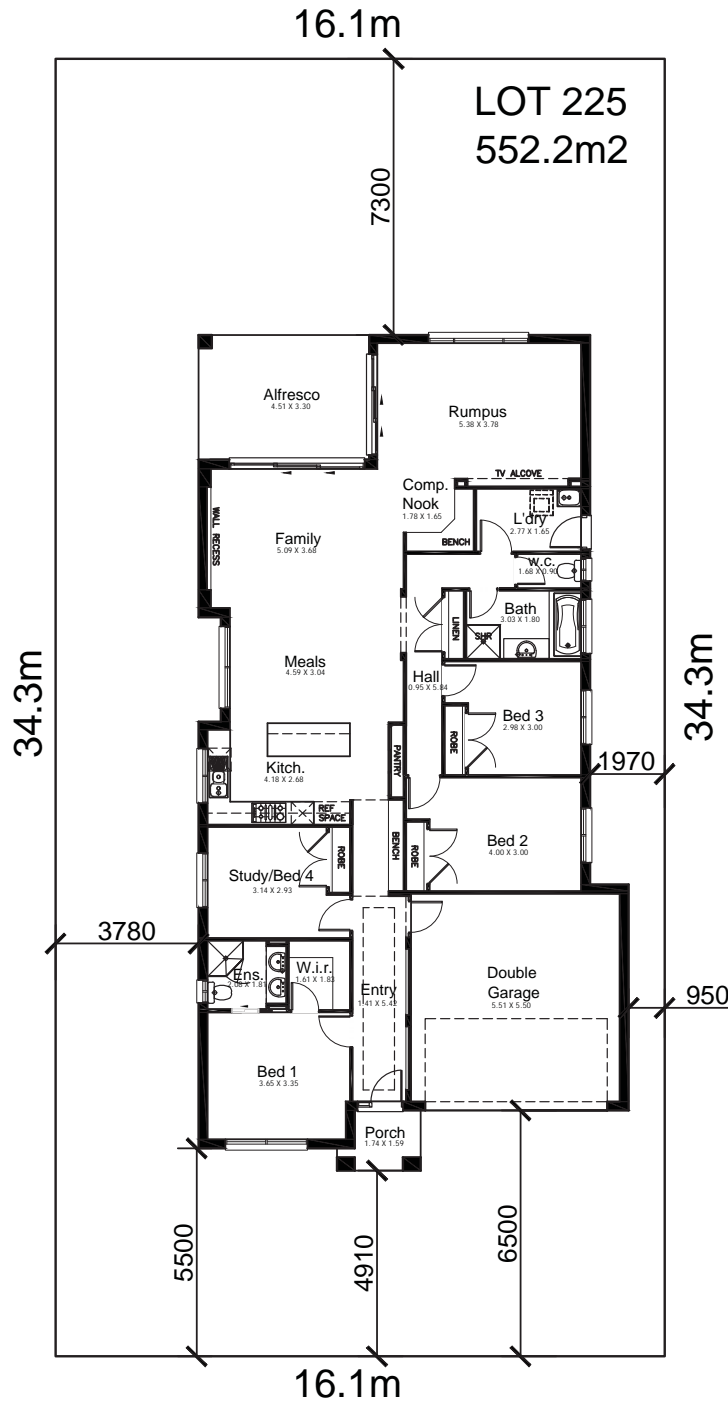
Call **1300 764 761**  
enquiries@kurmondhomes.com.au  
**www.kurmondhomes.com.au**



**kurmondhomes**  
*Designing and building your dream*

Disclaimer: Kurmond Homes reserves the right to change prices & inclusions without prior notice & without obligation. Images shown are for illustrative purposes only. Note: Developer estates may have varying/ additional requirements. Issued 19th January 2012. Lic No. 205 457C

**NEWPORT MKII** With Classic Facade  
 Lot 225 Claremont Meadows



Call **1300 764 761**  
 enquiries@kurmondhomes.com.au  
**www.kurmondhomes.com.au**



**kurmondhomes**  
*Designing and building your dream*