

# \$521,000\*

ASPECT 26 With Tempo Facade  
Lot 237 Claremont Meadows

sienna  
gardens 



Outdoor Lifestyle



Recreational Space

## Package Includes:

- ACTRON Ducted air conditioning throughout
- Choice of timber, tile &/or carpet floor coverings
- 20mm QUANTUM QUARTZ stone tops to kitchen & vanities
- Polyurethane kitchen & vanities
- TILED ALFRESCO
- BLANCO 900mm stainless steel appliances, including 600mm dishwasher
- Coloured concrete DRIVEWAY
- 3 coat paint system, including 2 feature wall options
- Sarking to underside of roof
- 2750MM CEILINGS as standard
- Plus much more...



### Dimensions

Living	189.86m <sup>2</sup>
Garage	33.32m <sup>2</sup>
Porch	3.38m <sup>2</sup>
Alfresco	13.57m <sup>2</sup>
<b>Total Area</b>	<b>240.13m<sup>2</sup></b>
<hr/>	
Width	12.30m
Depth	21.21m

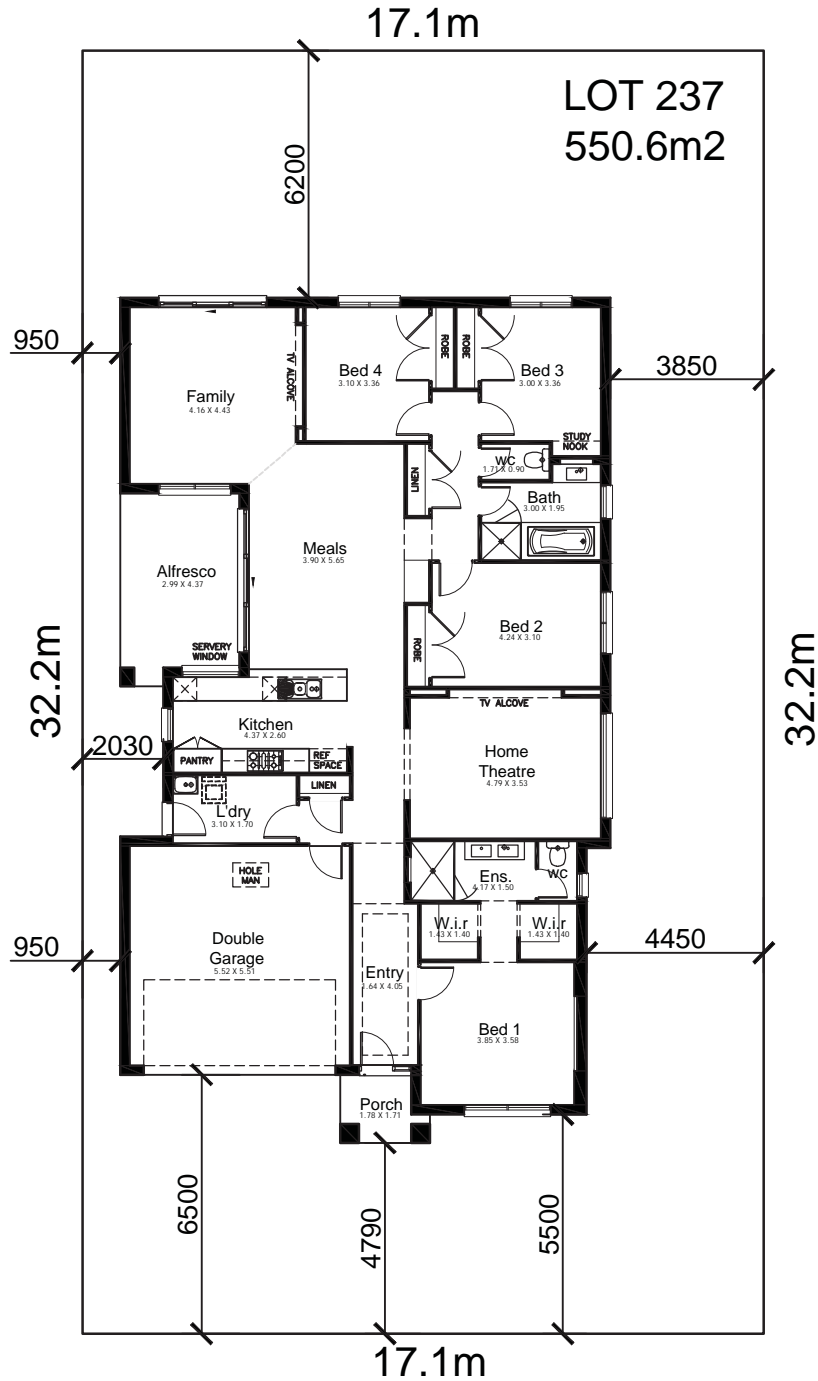
Call **1300 764 761**  
enquiries@kurmondhomes.com.au  
**www.kurmondhomes.com.au**



**kurmondhomes**  
*Designing and building your dream*

Disclaimer: Kurmond Homes reserves the right to change prices & inclusions without prior notice & without obligation. Images shown are for illustrative purposes only. Note: Developer estates may have varying/ additional requirements. Issued 19th January 2012. Lic No. 205 457C

**ASPECT 26** With Tempo Facade  
 Lot 237 Claremont Meadows



Call **1300 764 761**  
 enquiries@kurmondhomes.com.au  
 www.kurmondhomes.com.au



**kurmondhomes**  
*Designing and building your dream*