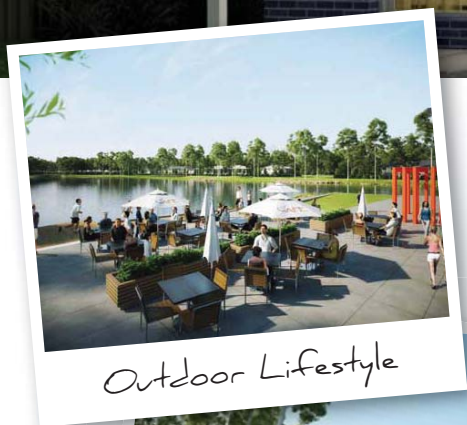


\$509,964*

EDGECLIFF 22.5 With Nelson Facade
Lot 3130 Northridge Road, Jordan Springs



JORDAN SPRINGS



Outdoor Lifestyle



Recreational Space

Package Includes:

- ACTRON Ducted air conditioning throughout
- Choice of timber, tile &/or carpet floor coverings
- 20mm QUANTUM QUARTZ stone tops to kitchen & vanities
- Polyurethane kitchen & vanities
- TILED ALFRESCO
- BLANCO 900mm stainless steel appliances, including 600mm dishwasher
- Coloured concrete DRIVEWAY
- 3 coat paint system, including 2 feature wall options
- Sarking to underside of roof
- 2750MM CEILINGS as standard
- Plus much more...



Dimensions

Living	187.50m ²
Garage	19.15m ²
Porch	2.69m ²

Total Area 209.34m²

Width	7.92m
Depth	15.83m

Call **1300 764 761**
enquiries@kurmondhomes.com.au
www.kurmondhomes.com.au



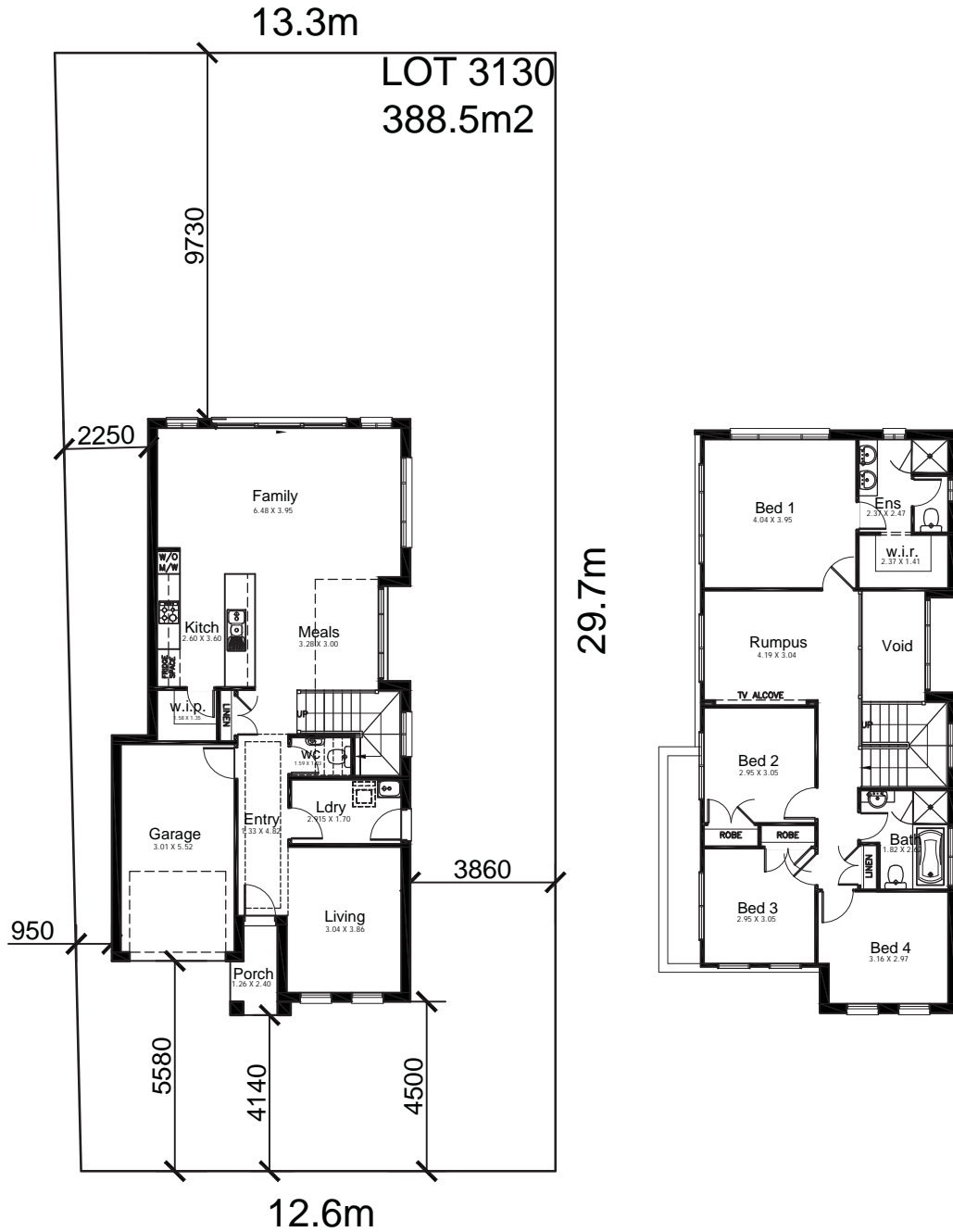
kurmondhomes
Designing and building your dream

Disclaimer: Kurmond Homes reserves the right to change prices & inclusions without prior notice & without obligation. Images shown are for illustrative purposes only. Note: Developer estates may have varying/ additional requirements. Issued 23rd January 2012. Lic No. 205 457C

EDGECLIFF 22.5 With Nelson Facade
 Lot 3130 Northridge Road, Jordan Springs



JORDAN SPRINGS



Call **1300 764 761**
 enquiries@kurmondhomes.com.au
www.kurmondhomes.com.au



kurmondhomes
Designing and building your dream