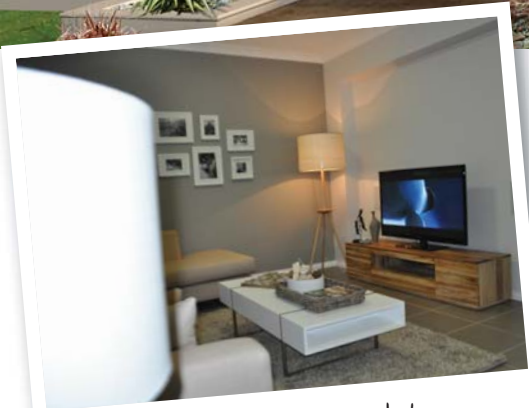


# \$553,700\*

**SIERRA 27** With Epic Facade  
Lot 37 Ingleburn Gardens



MONARCH'S  
**INGLEBURN GARDENS**  
ESTATE



*Value & Quality*



*Impressive Design Range*

## Package Includes:

- ACTRON Ducted air conditioning throughout
- Choice of timber, tile &/or carpet floor coverings
- 20mm QUANTUM QUARTZ stone tops to kitchen & vanities
- Polyurethane kitchen & vanities
- TILED ALFRESCO
- BLANCO 900mm stainless steel appliances, including 600mm dishwasher
- Coloured concrete DRIVEWAY
- 3 coat paint system, including 2 feature wall options
- Sarking to underside of roof
- 2750MM CEILINGS as standard
- Plus much more...



**kurmondhomes**  
*Designing and building your dream*



### Dimensions

Total Area	248.04m <sup>2</sup>
Living	197.42m <sup>2</sup>
Garage	33.36m <sup>2</sup>
Porch	2.42m <sup>2</sup>
Home Width	13.09m
Home Depth	20.49m

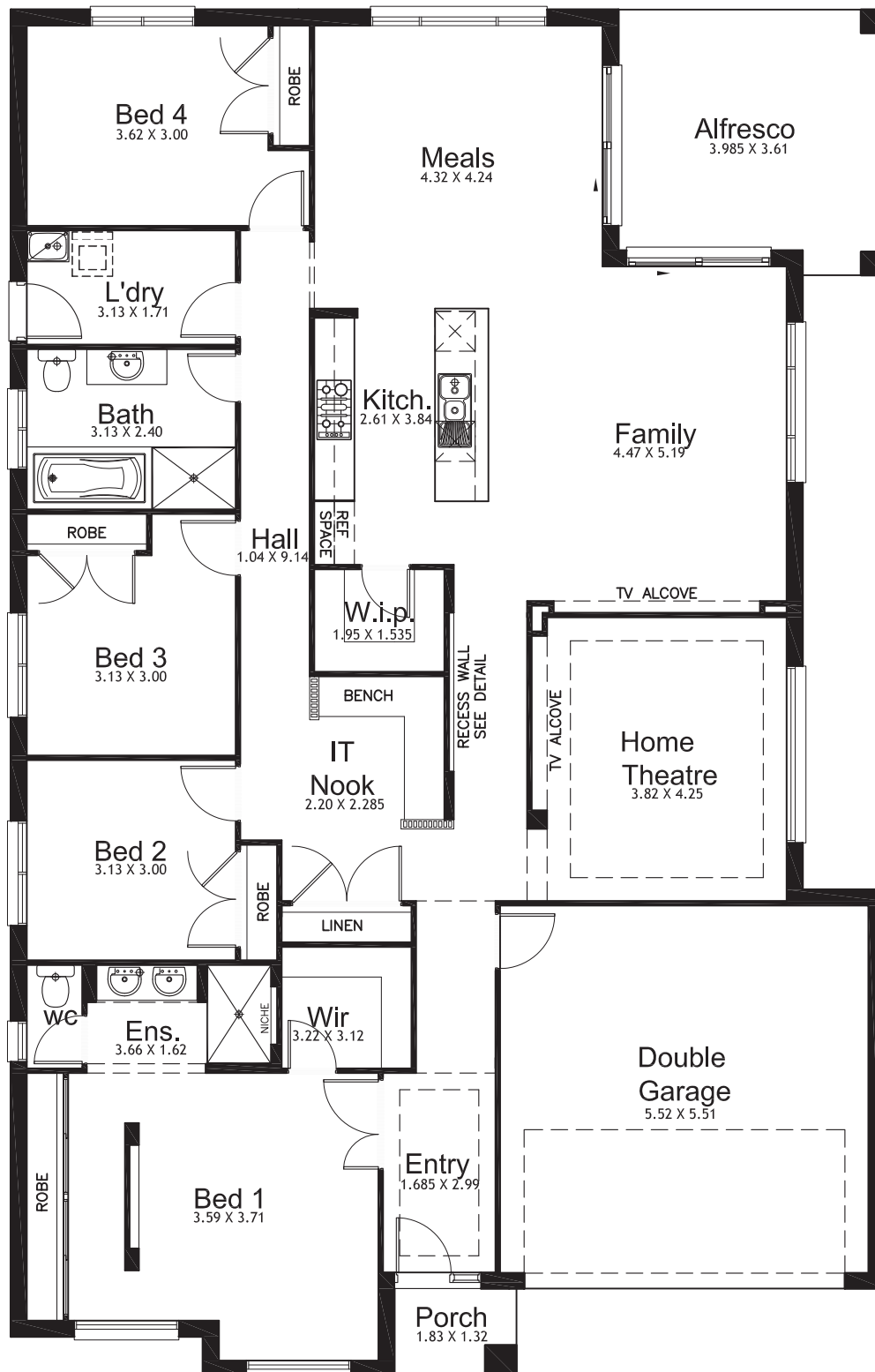
Disclaimer: Kurmond Homes reserves the right to change prices & inclusions without prior notice & without obligation. Images shown are for illustrative purposes only. Note: Developer estates may have varying/ additional requirements. Issued 22nd December 2011. Lic No. 205 457C

**PHONE 1800 LIVE HERE**  
[www.ingleburngardens.com.au](http://www.ingleburngardens.com.au)

**MONARCH**  
LEADERS IN LAND & PROPERTY SINCE 1955



**SIERRA 27** With Epic Facade  
Lot 37 Ingleburn Gardens



Disclaimer: Kurmond Homes reserves the right to change prices & inclusions without prior notice & without obligation. Images shown are for illustrative purposes only. Note: Developer estates may have varying/ additional requirements. Issued 22nd December 2011. Lic No. 205 457C

**SALES OFFICE - Jo Lucas > 0408 242 150**

Open Wednesday to Sunday 10am to 4pm

17 Ingleburn Gardens Drive, Bardia (Off Campbelltown Road)