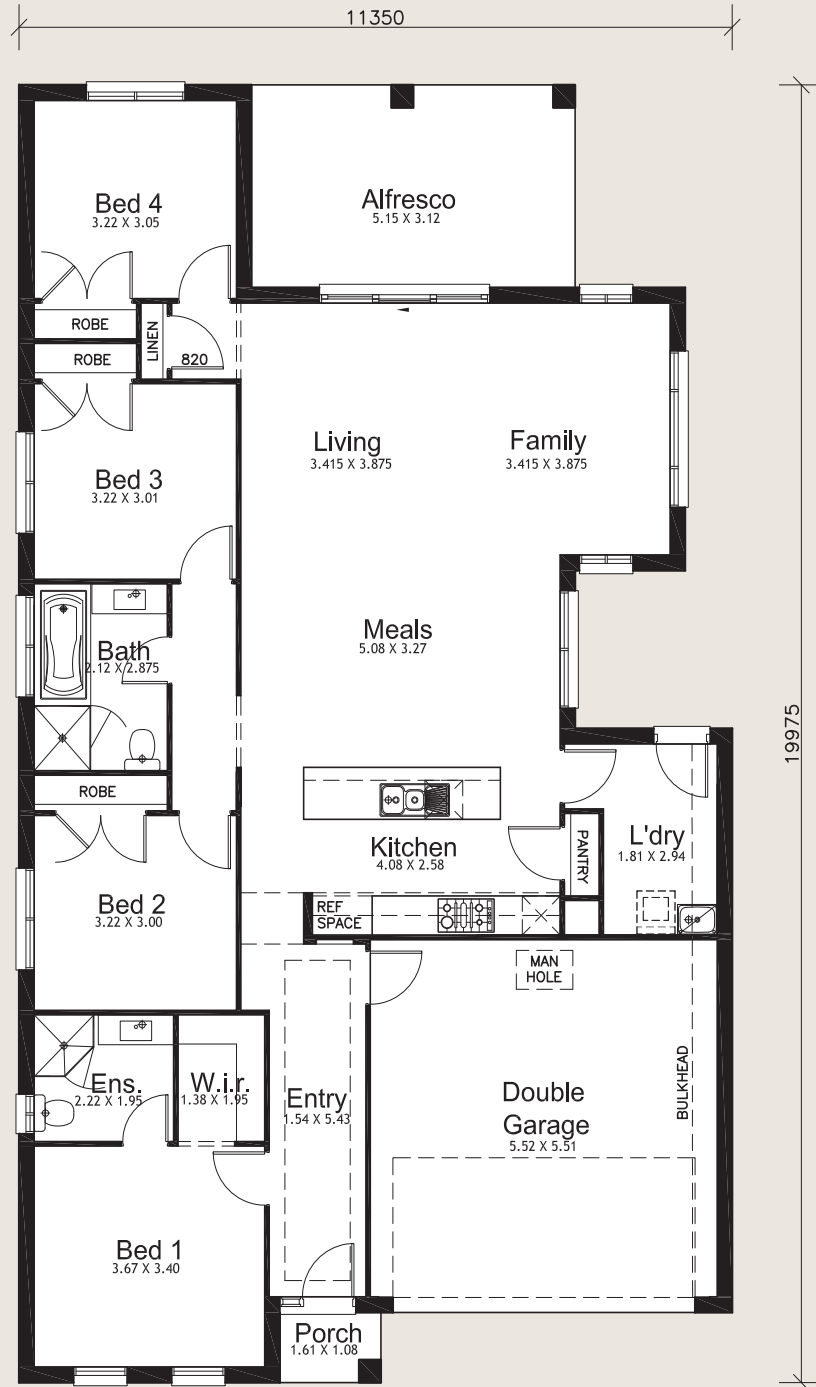


Presenting the
Ivy 22

Contemporary Facade



Bedrooms	4
Bathrooms	2
Car Spaces	2
Width	11.35m
Depth	19.975m

Ground Floor	152.67m ²
Garage	33.06m ²
Porch	1.74m ²
Alfresco Area:	16.07m ²
Total	203.54m²

K kurmondhomes
Designing and building your dream