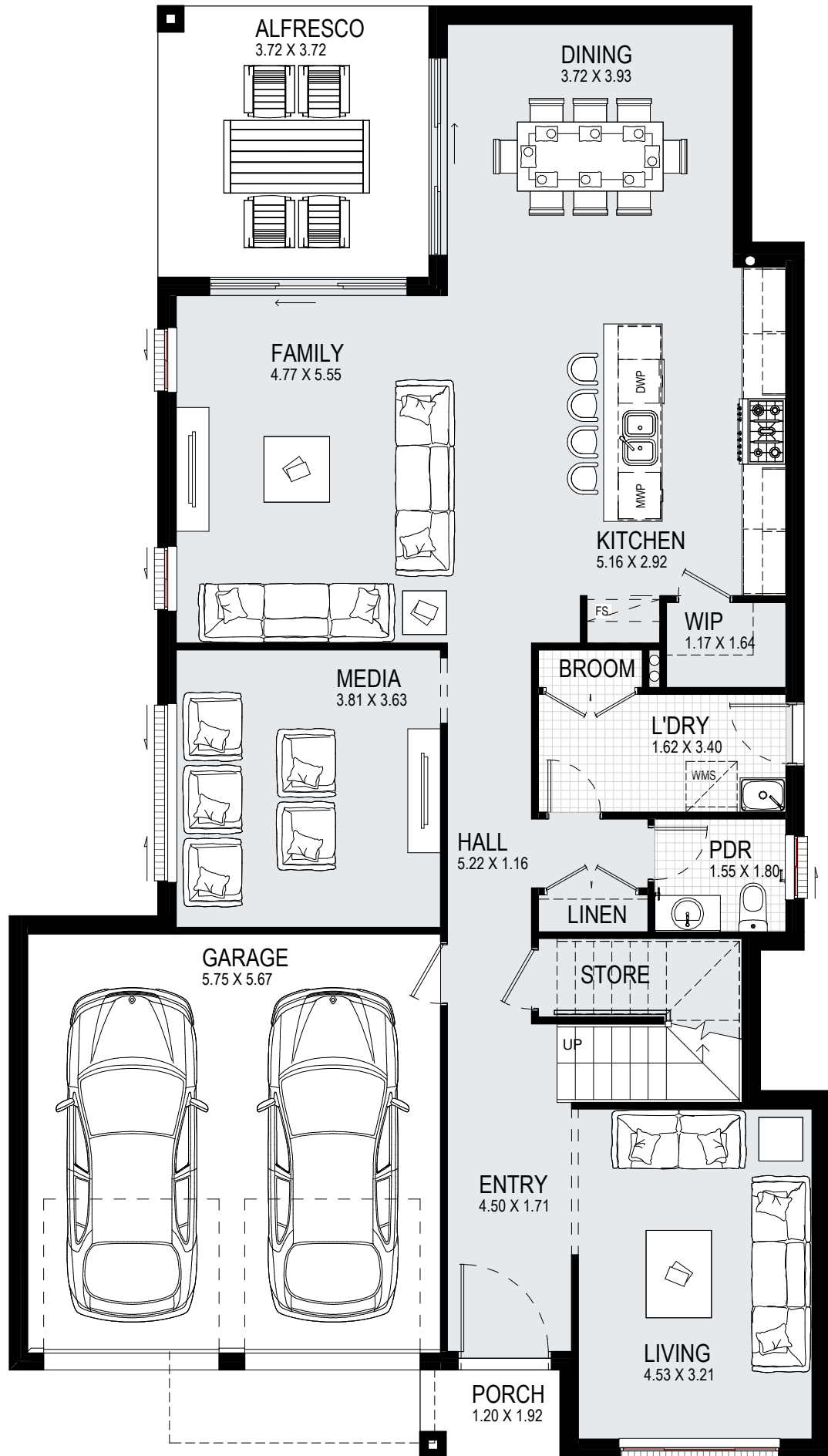
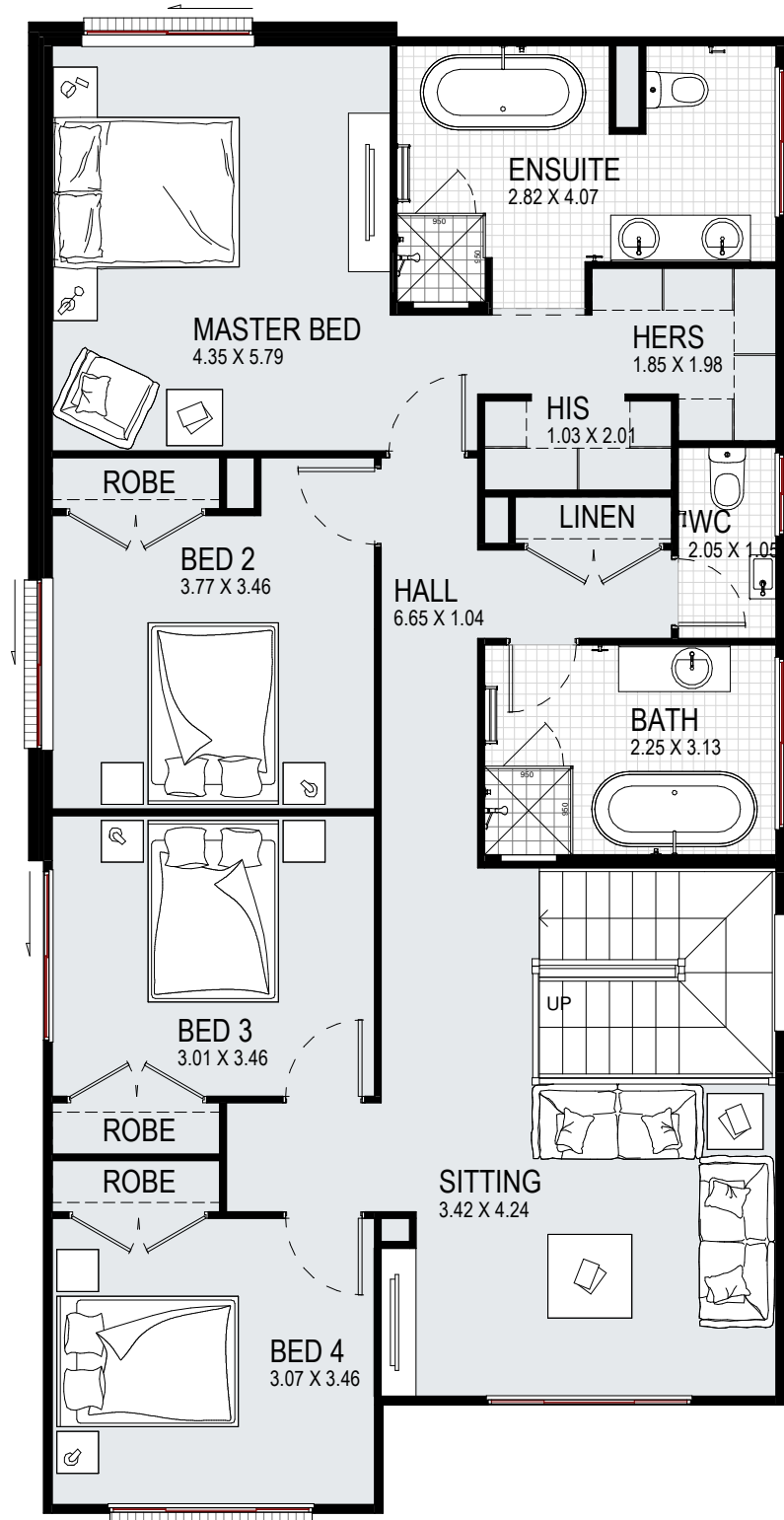




SUITABLE FOR:  
**12.5m + FRONTAGE**  
 SUITABLE FOR ZERO LOT BOUNDARY



GROUND FLOOR PLAN



FIRST FLOOR PLAN

**BRONTE 33 MK1**  
**COLORADO**

GROUND FLOOR	131.26 m <sup>2</sup>	14.13
FIRST FLOOR	117.54 m <sup>2</sup>	12.65
GARAGE	35.91 m <sup>2</sup>	3.87
PORCH	2.30 m <sup>2</sup>	0.25
ALFRESCO	13.84 m <sup>2</sup>	1.49
STAIR VOID	5.72 m <sup>2</sup>	0.62
TOTAL	306.57 m <sup>2</sup>	33.00
TOTAL WIDTH:	11.27 m	
TOTAL LENGTH:	19.91 m	

BROCHURE GROUND FLOOR

**kurmondhomes** PTY LTD  
 BUILDERS LICENCE: 205 457C ABN: 481 288 211 98

10 Sovereign Place  
 South Windsor  
 NSW 2756. © COPYRIGHT

T: 1300 764 761  
 F: (02) 4577 6332  
 ALL RIGHTS RESERVED. This plan is the property of KURMOND HOMES PTY LTD. Copyright in this documents is owned by KURMOND HOMES PTY LTD. Under the provisions of the Copyright ACT 1968 and is intended for use only as authorised by KURMOND HOMES PTY LTD.