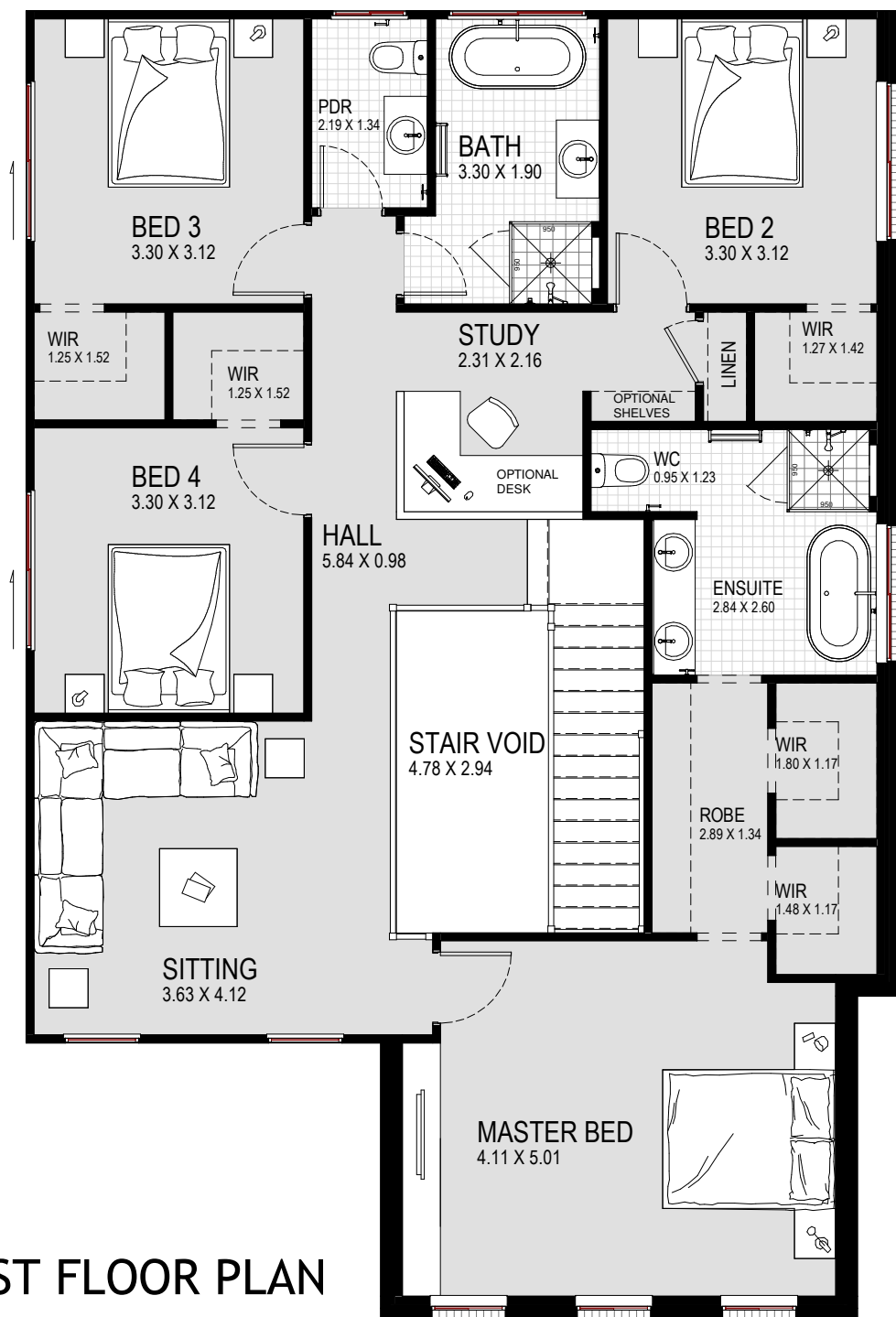




SUITABLE FOR:  
**13m + FRONTAGE**



**EVOQUE 38**  
**CONCEPT FACADE**

GROUND FLOOR	143.06 m <sup>2</sup>	15.40
FIRST FLOOR	125.55 m <sup>2</sup>	13.51
GARAGE	35.50 m <sup>2</sup>	3.82
PORCH	3.43 m <sup>2</sup>	0.37
ALFRESCO	36.82 m <sup>2</sup>	3.96
STAIR VOID	12.09 m <sup>2</sup>	1.30
TOTAL	356.45 m <sup>2</sup>	38.37
TOTAL WIDTH: 11.87 m	TOTAL LENGTH: 21.47 m	

**BROCHURE PLAN**

**kurmondhomes** PTY LTD  
 BUILDERS LICENCE: 205 457C    ABN: 481 288 211 98  
 10 Sovereign Place    © COPYRIGHT  
 South Windsor    NSW 2756.  
 T: 1300 764 761  
 F: (02) 4577 6332

ALL RIGHTS RESERVED. This plan is the property of KURMOND HOMES PTY LTD. Copyright in this document is owned by KURMOND HOMES PTY LTD. Under the provisions of the Copyright ACT 1968 and is intended for use only as authorised by KURMOND HOMES PTY LTD.